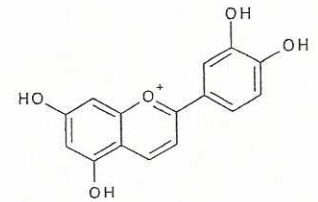




# INDOFINE Chemical Company, Inc.

121 Stryker Lane, Building 30  
Hillsborough, NJ 08844 USA  
Phone: (908) 359-6778; Fax: (908) 359-1179



Cl<sup>-</sup>

**HPLC Lot No.: 14010809**

**LUTEOLINIDIN CHLORIDE**

**020925S**

### IDENTIFICATION

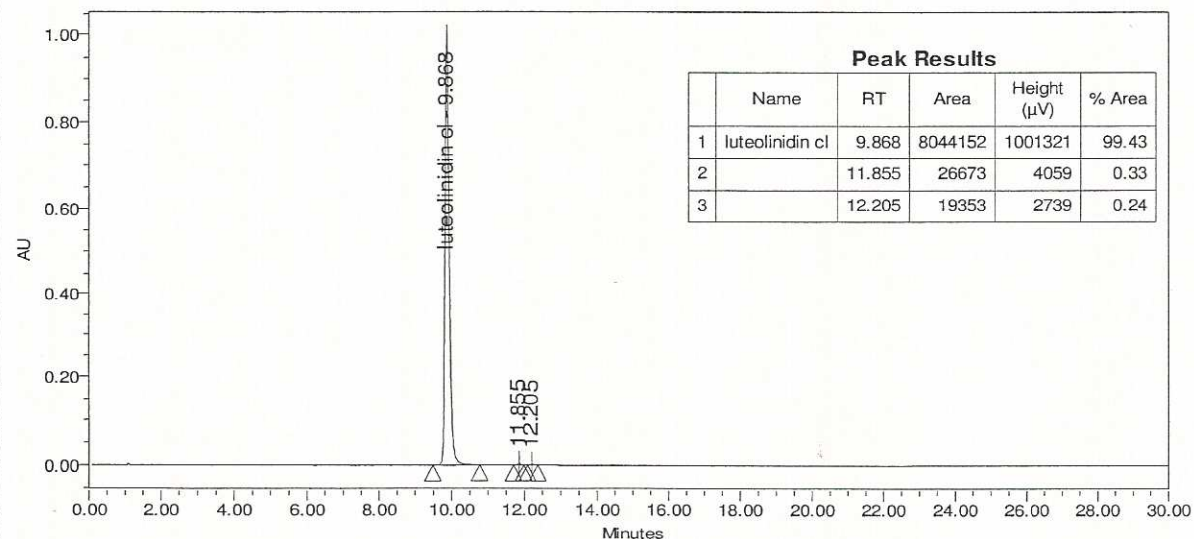
CAS Number	[1154-78-5]
Chemical family	Anthocyanins
Molecular formula	C <sub>15</sub> H <sub>11</sub> O <sub>5</sub> Cl
Synonym	3', 4', 5, 7-Tetrahydroxyflavylium chloride
Molecular weight	306.68

### CERTIFICATE OF ANALYSIS

Appearance	Powder
Thin layer chromatography	support cellulose
	solvent acetic acid / HCl / water (70/7/23 ; V/V/V)
	detection Visible
Absorption maxima	499 nm in methanol + HCl 0.1%
Storage	Store at <-15°C in a dry and dark place. Place in a desiccator under vacuum before use

### HIGH PERFORMANCE LIQUID CHROMATOGRAPHY

Column	Nova pak C18® (3.9 x 150 mm), particle size 4 μm
Solvent	20 mn linear gradient from 5 to 60% B and 5 mn linear gradient from 60 to 100% B then 5 mn isocratic 100% B A=water + 10% formic acid B=methanol
Flow rate	1 ml/mn
Detector	UV visible 485 nm
Sample solvent	Methanol + 0.1% HCl



Assay by an HPLC method.

Date of last QC-recheck  
Date of retest

September 2012  
September 2016

*The values given on the 'Certificate of Analysis' are the results determined at the time of analysis.*